

Roll Number

SET A



INDIAN SCHOOL MUSCAT
SECOND PRE - BOARD EXAMINATION
ENGINEERING GRAPHICS (046)

CLASS: XII

TERM 2

Time Allotted: 2 hrs

13.04.2022

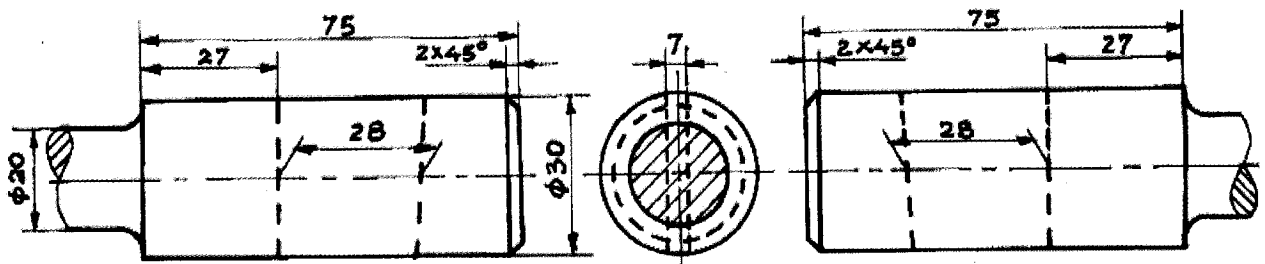
Max. Marks: 35

GENERAL INSTRUCTIONS:

- (i) Attempt all the questions.
- (ii) Use both sides of the drawing sheet, if necessary.
- (iii) All dimensions are in millimeters.
- (iv) Missing and mismatching dimensions, if any, may be suitably assumed.
- (v) Follow the SP: 46 – 2003 revised codes. (with first angle method of projection)
- (vi) In question 2, hidden edges or lines are to be shown in views without section.

1. Sketch free hand the Front View and Side View of a Collar Stud of 20mm diameter having horizontal axis. Give standard dimensions. 7
2. Figure shows the details parts of a Sleeve and Cotter Joint. Assemble all the parts correctly and then draw to scale 1:1; it's following views: 28
 - (i) Front View, upper half in section.
 - (ii) Side View looking from the left end.

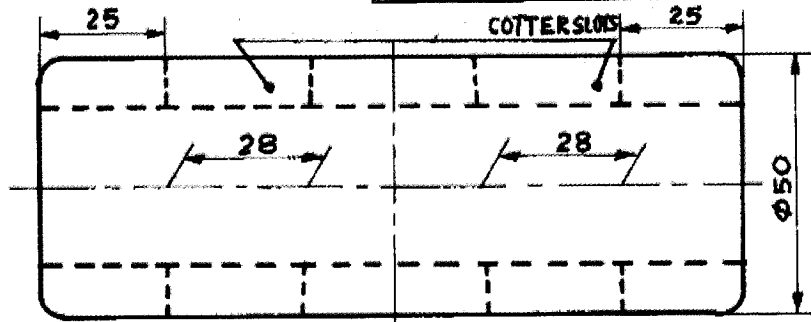
Print the title and scale used. Draw projection symbol. Give 6 important dimensions.



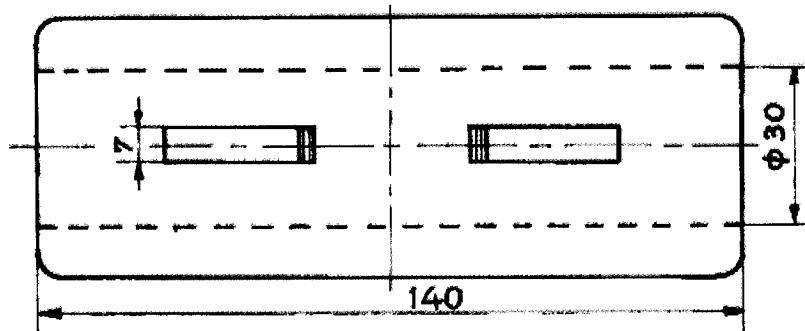
FRONT VIEW LEFT SIDE VIEW

ROD-A (M.S.), 1-OFF

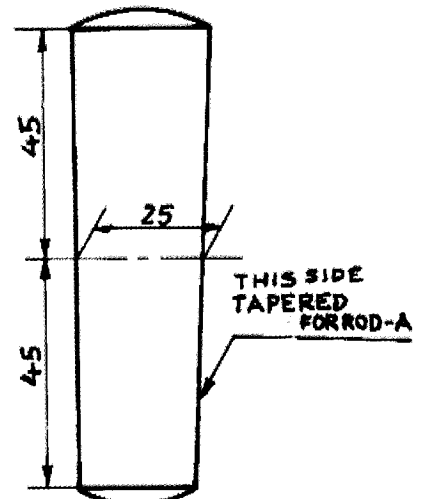
FRONT VIEW
ROD-B (M.S.), 1-OFF



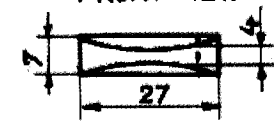
FRONT VIEW



TOP VIEW
SLEEVE (M.S.), 1-OFF



FRONT VIEW



TOP VIEW
COTTER (M.S.), 2-OFF

चित्र 1 / FIG 1. SLEEVE AND COTTER JOINT
NOTE: ALL ROUNDS AND FILLETS R4

End of the Question Paper